
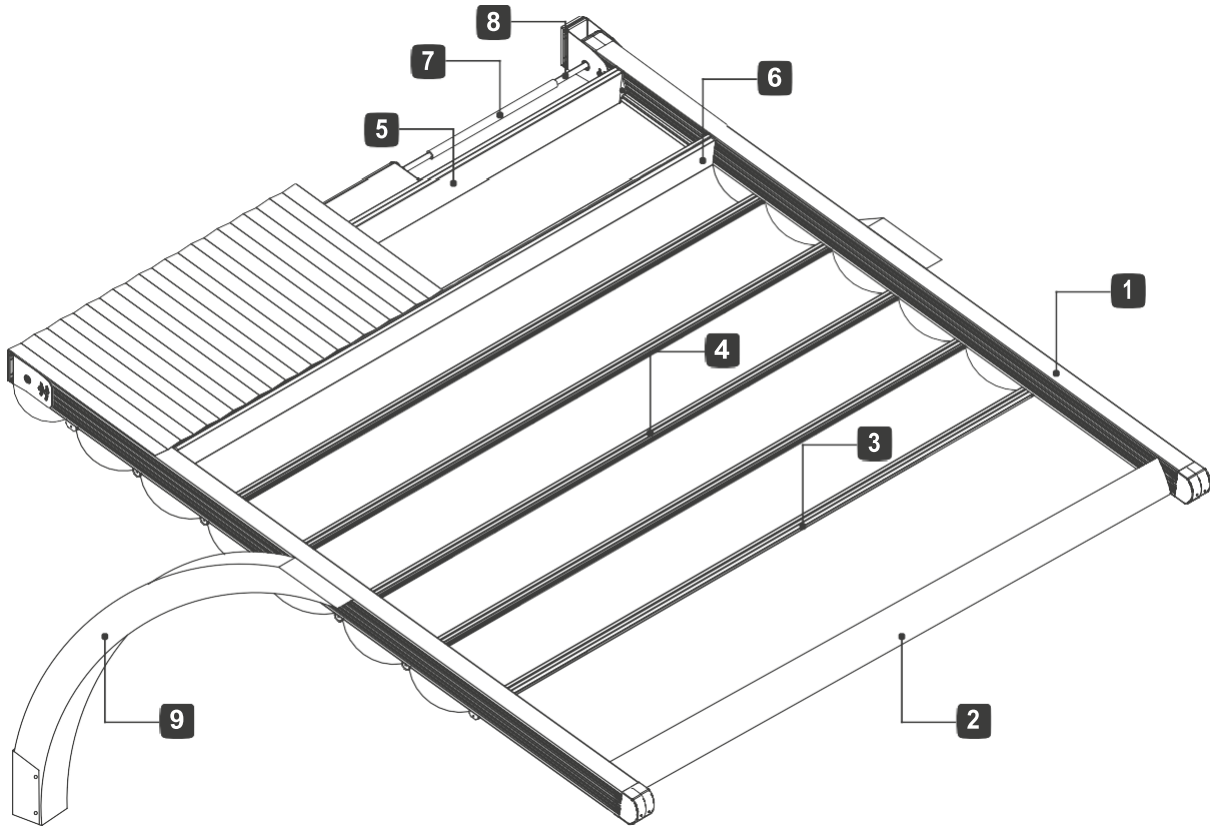


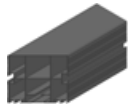
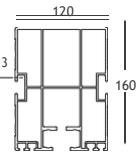


R4 SUBULATE
TECTONA 
Information

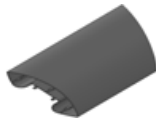
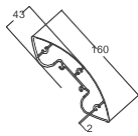




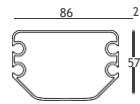
1 Rafter Profile



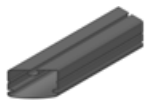
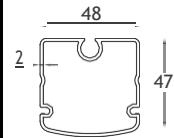
2 Aerofoil Louvre Profile



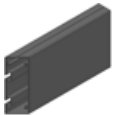
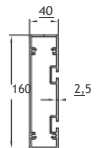
3 Fabric Profile | Master



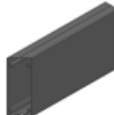
4 Fabric Profile | Carrier



5 Motor Box Profile



6 Roof Sash Profile



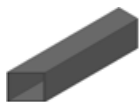
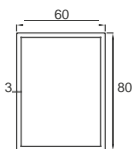
7 Motor Shaft Pipe Profile | Thick



8 Motor Shaft Pipe Profile | Thin

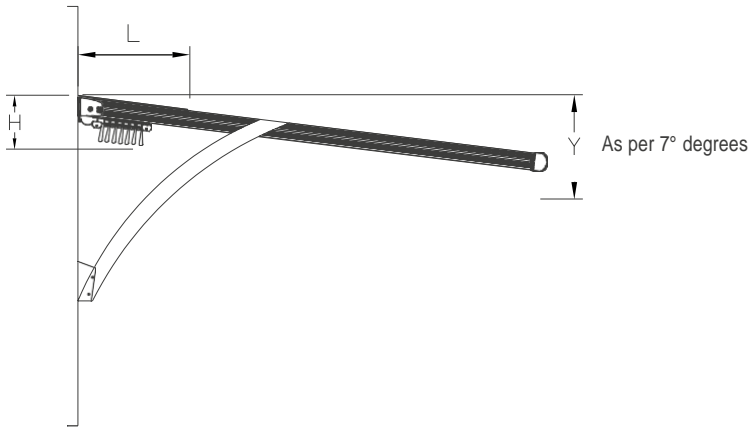


9 Iron Profile 60x80



* All dimensions shown above are in millimeters.


Size may vary upon the number of seals



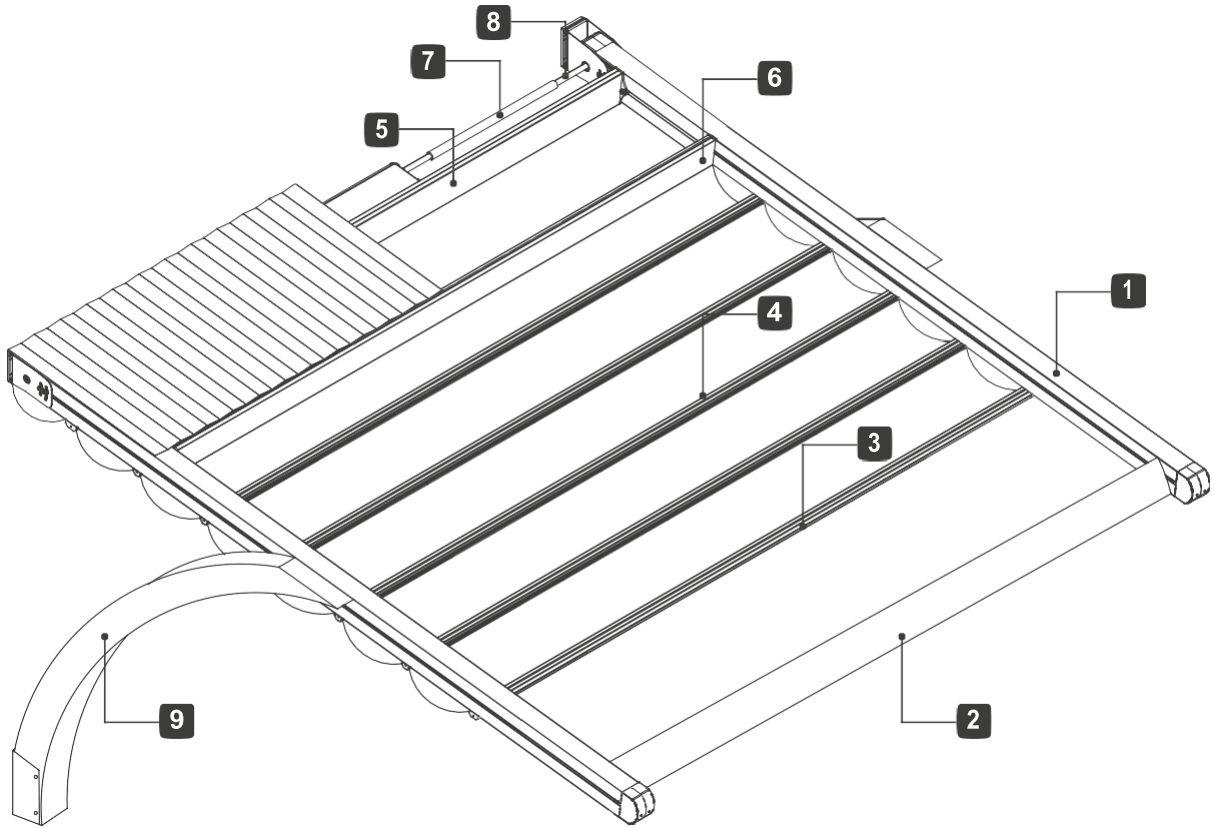
Projection ^	Fabric Fall Height (H)	Hood Cover (L)	7° Degree Rule Fall Height (Y)	Fabric Profile Carrier
3000	542	710	680	7 pcs
4000	554	850	803	9 pcs

* Distances between fabric profiles had been calculated and measured as 50 cm and it may. Vary upon the measurement of each project therefore you are kindly requested to Contact your key account manager in order to avoid any misunderstanding otherwise ALS will not be responsible for any mistakes that may occur.

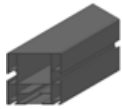
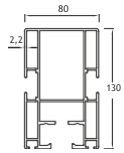


R4 SUBULATE
QUERCUS MINIMA 

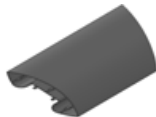
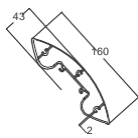
Information



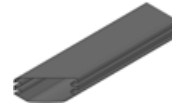
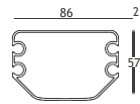
1 Rafter Profile



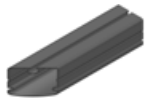
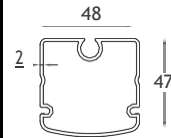
2 Aerofoil Louvre Profile



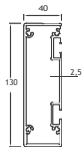
3 Fabric Profile | Master



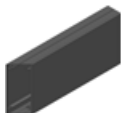
4 Fabric Profile | Carrier



5 Motor Box Profile



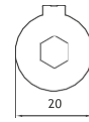
6 Roof Sash Profile



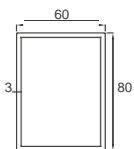
7 Motor Shaft Pipe Profile | Thick



8 Motor Shaft Pipe Profile | Thin

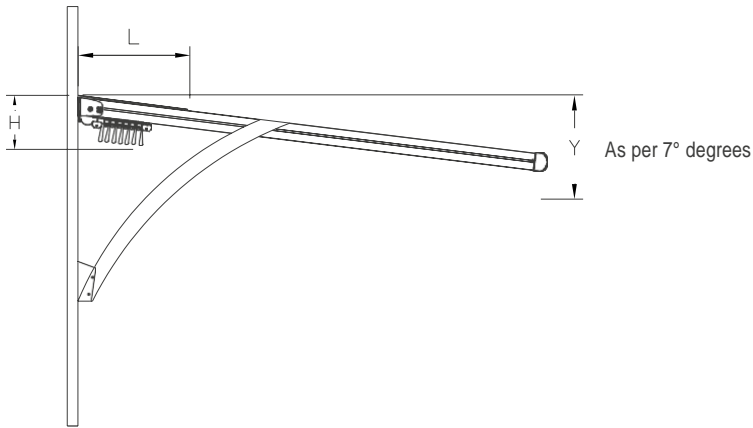


9 Iron Profile 60x80



* All dimensions shown above are in millimeters.

Size may vary upon the number of seals



Projection ^	Fabric Fall Height (H)	Hood Cover (L)	7° Degree Rule Fall Height (Y)	Fabric Profile Carrier
3000	519	710	650	7 pcs
4000	537	850	770	9 pcs

* Distances between fabric profiles had been calculated and measured as 50 cm and it may. Vary upon the measurement of each project therefore you are kindly requested to Contact your key account manager in order to avoid any misunderstanding otherwise ALS will not be responsible for any mistakes that may occur.



Your Notes: